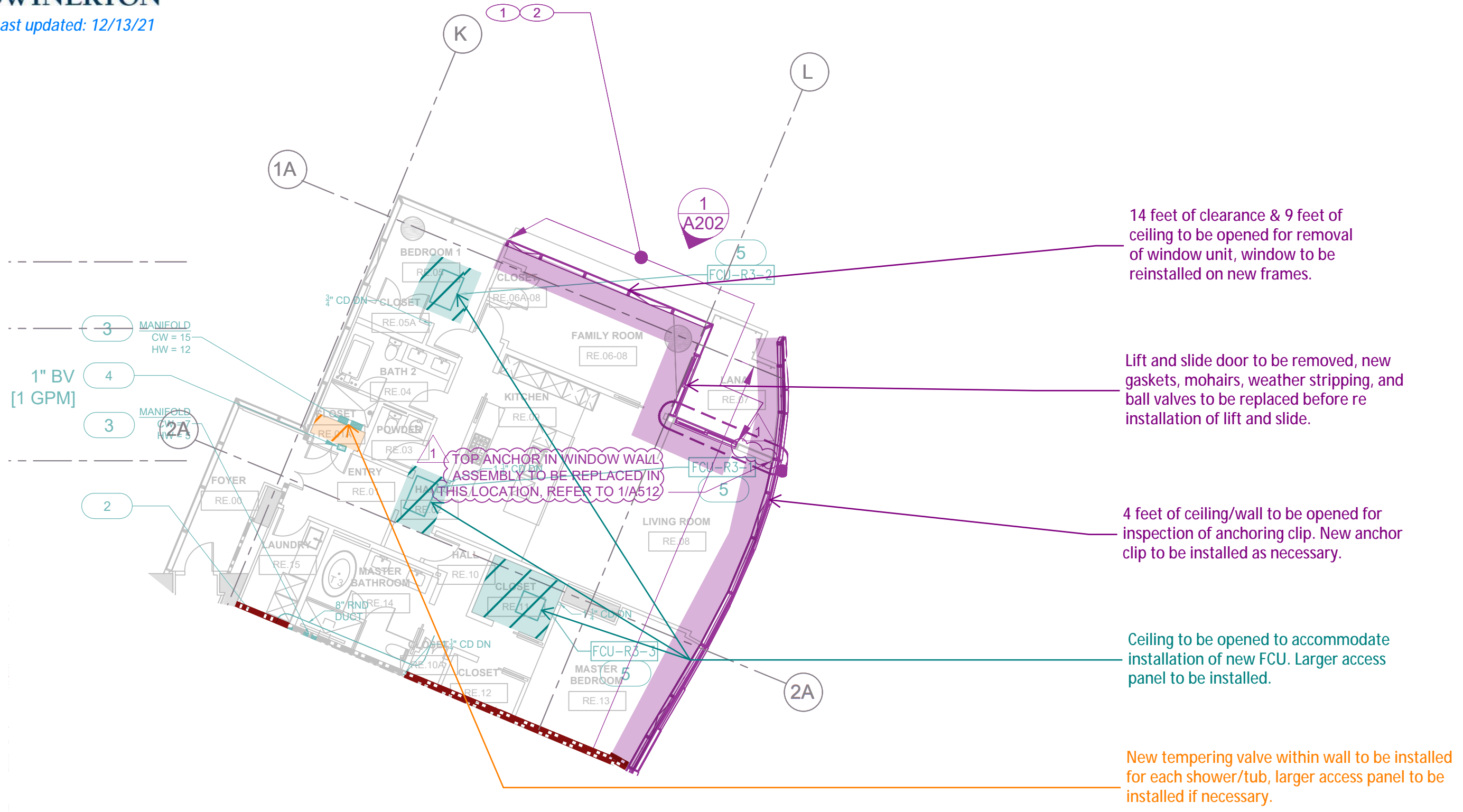




**SWINERTON**

Last updated: 12/13/21

# Waiea Typical 06 Unit Details



# Waiea Typical 06 Unit Logistics / Storage

This entire room (except for closet) must be emptied of furniture. Room will have windows removed for at least 24 hours. Temporary protection will be installed. Items left in room will be at risk due to close proximity to edge of building.

**Ceiling Fixture Relocation Anticipated**

Yellow Clouds - Light fixture and ceiling device layout subject to change

**Blue Boxes** - Areas designating storage spaces

**Red Boxes** - Areas require removal of personal belongings and artwork. Remove furniture if possible, or to be protected in place and/or relocated in the room by Contractor on a case-by-case basis.

Red Boxes - Areas require removal of personal belongings and artwork. Remove furniture if possible, or to be protected in place and/or relocated in the room by Contractor on a case-by-case basis.

**Orange Boxes** - Areas designating construction path of travel. Unit Owner to relocate all items to the designated storage spaces (Blue Boxes).

Orange Boxes - Areas designating construction path of travel. Unit Owner to relocate all items to the designated storage spaces (Blue Boxes).

Unit owner to relocate all items to one of the designated storage spaces (Blue Boxes). If there is not enough space in these areas, Unit Owners will need to store their items outside of the unit throughout the duration of the work.

Everything will need to be moved out of the work areas (all areas not shaded blue are work/passage spaces). This includes all bedding, pillows, blankets, plants, and anything currently hanging on the walls. Rooms to remain unlocked throughout construction. All valuables need to be removed from the property by the unit owner.

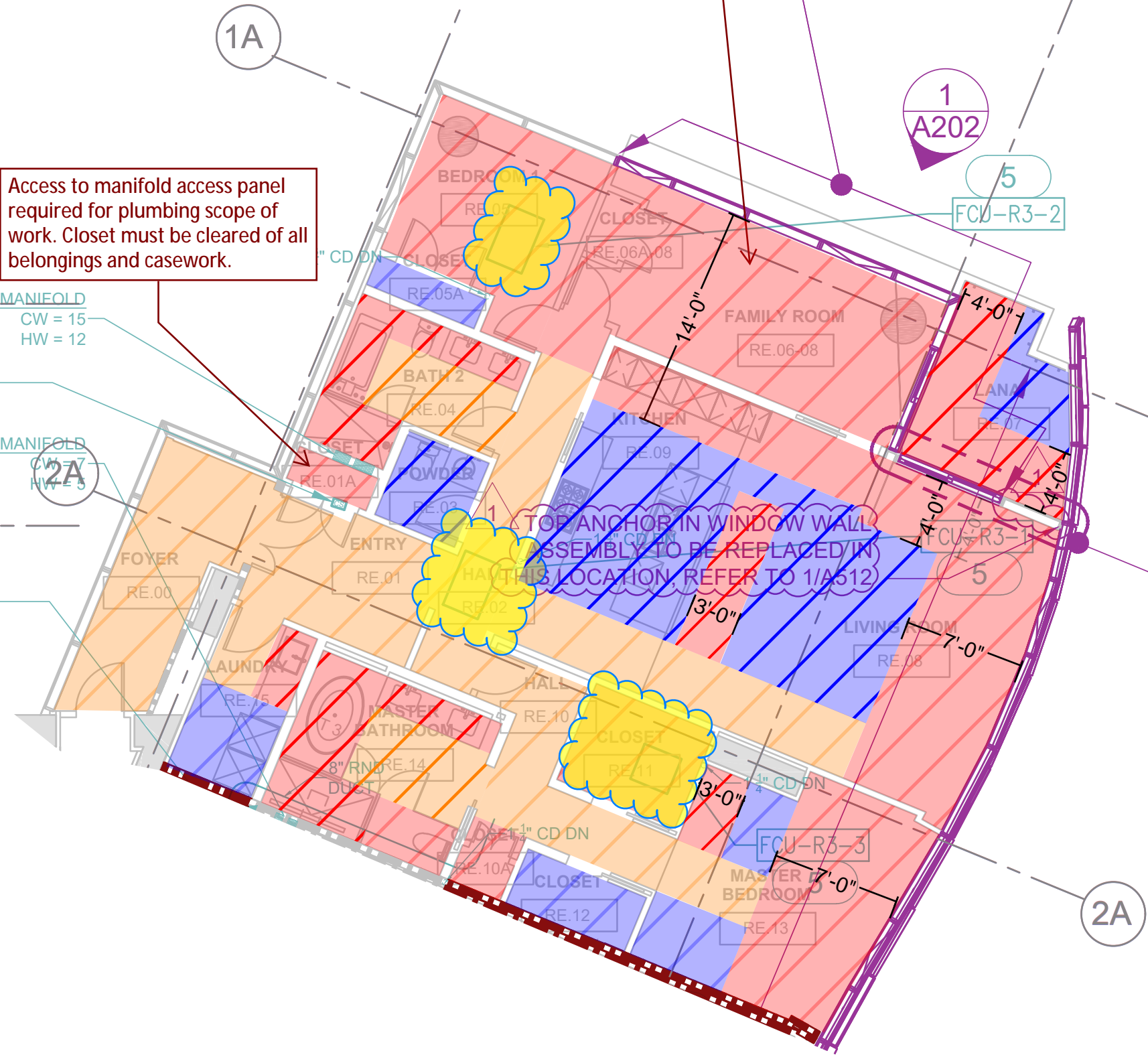
Owner-installed permanent/fixed casework including (but not limited to) closet systems, shelving, etc. currently located in work zones must be removed prior to construction start.

Note: The entire unit will be without air conditioning, water, or electricity for extended periods of time during construction. Remove all perishables from freezers, refrigerators, coolers, etc. Remove any artwork that may be sensitive to heat, humidity, or dust.

Access to manifold access panel required for plumbing scope of work. Closet must be cleared of all belongings and casework.

MANIFOLD  
CW = 15  
HW = 12

MANIFOLD  
CW = 7  
HW = 5





**SWINERTON**

Last updated: 12/13/21

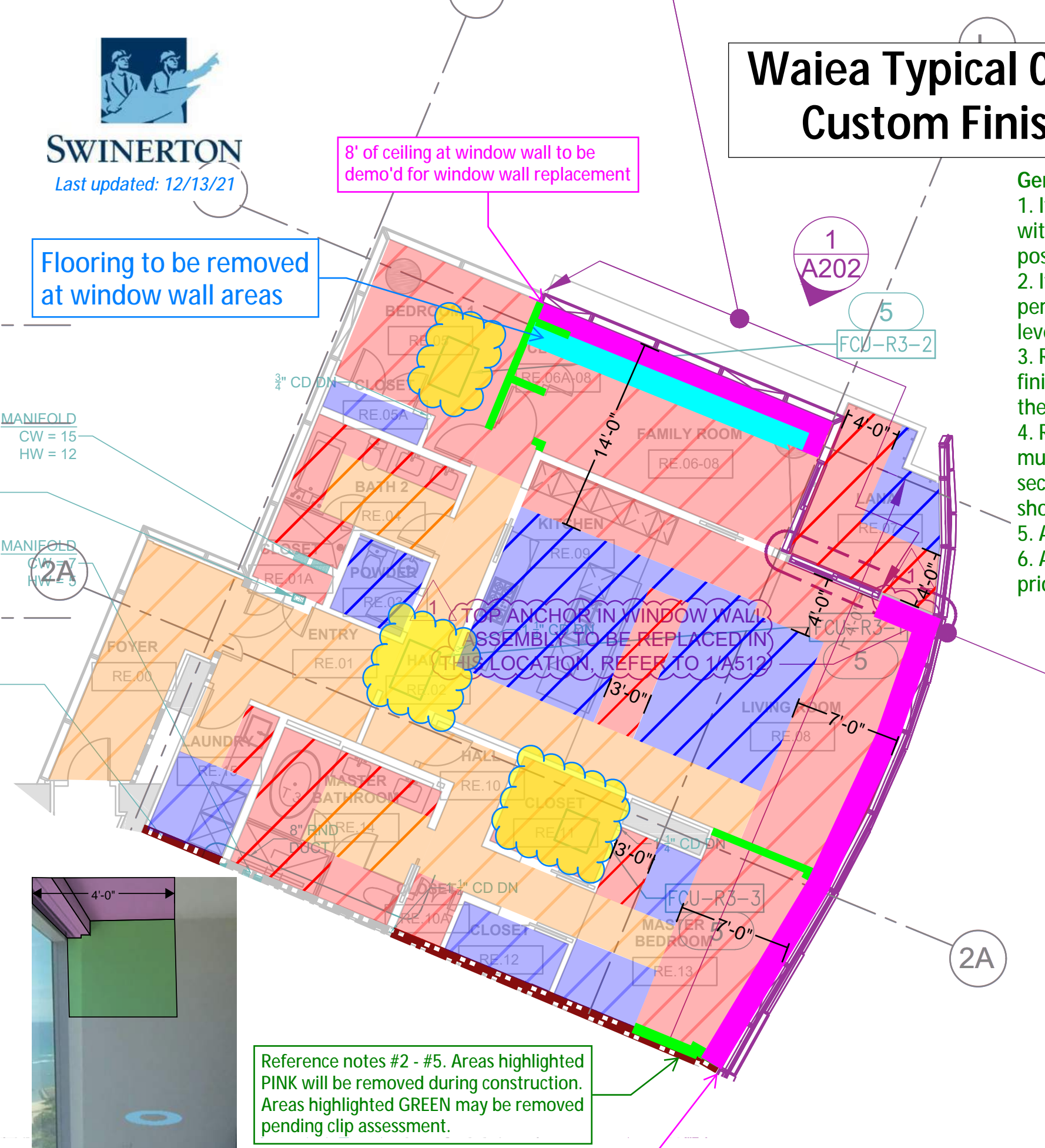
# Waiea Typical 06 Unit Custom Finishes

8' of ceiling at window wall to be demo'd for window wall replacement

Flooring to be removed at window wall areas

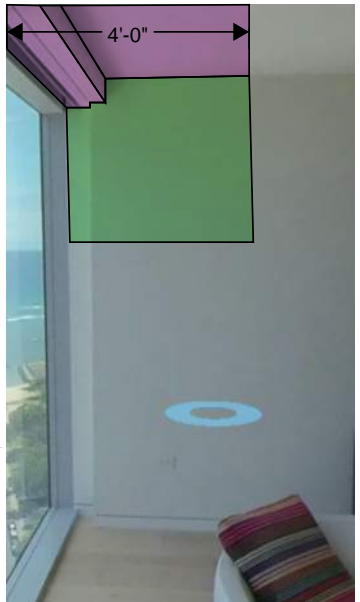
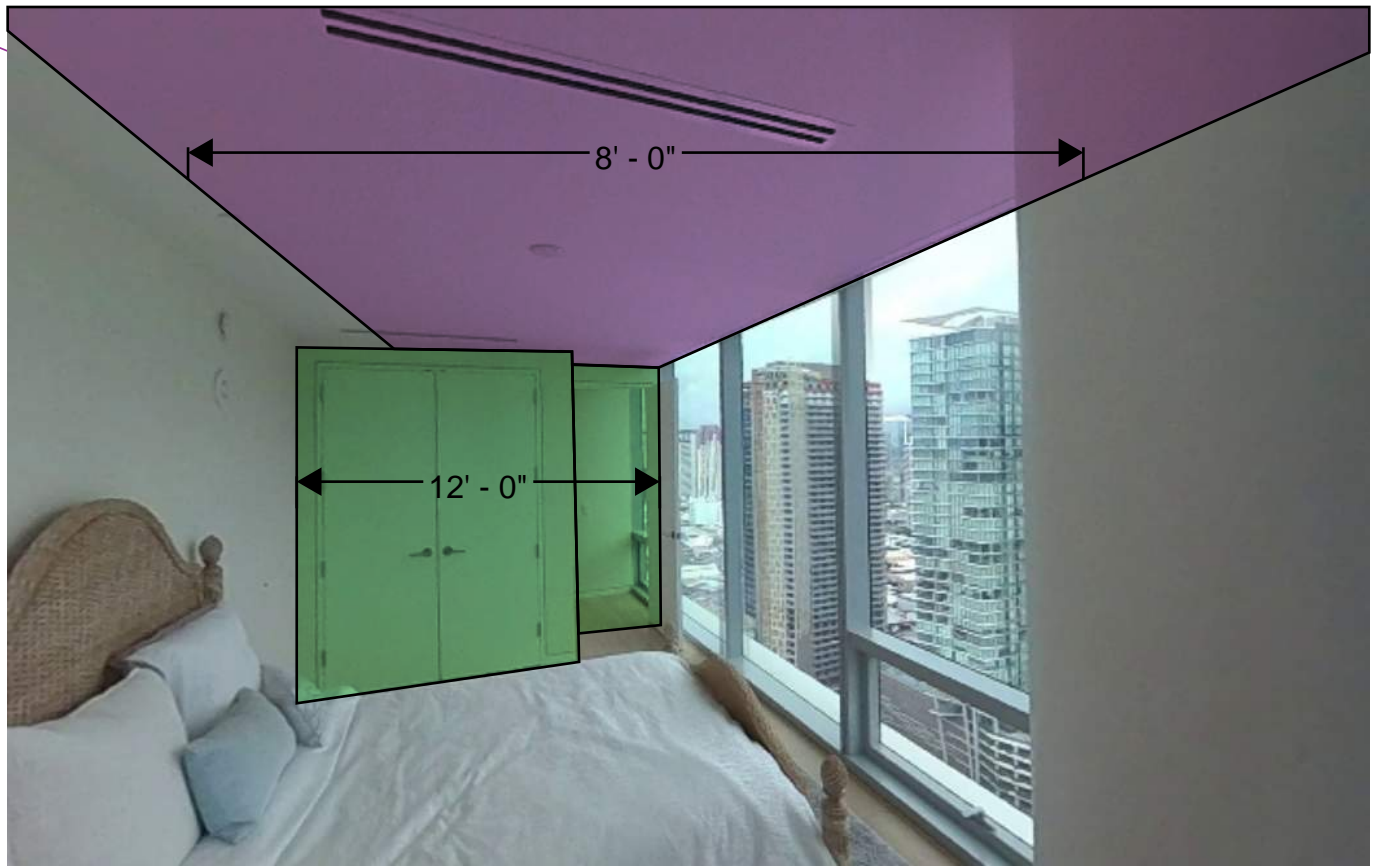
### General Notes:

1. If existing ceiling features such as lights, fire sprinklers, smoke detectors, speakers conflict with new FCU Access Panel, contractor shall attempt to maintain the original layout as much as possible.
2. If any custom finishes are directly installed on affected surfaces, they may be subject to permanent removal. In these instances, the affected surfaces will be returned as a standard level 5 painted finish.
3. Replacement of custom finishes shall be the responsibility of the unit owner. Replacement finishes must not be re-installed until after construction substantial completion and turnover of the unit back to the owner.
4. Replacement wall covering ONLY may be provided to contractor for reinstallation. Material must be transmitted to contractor by day of construction start. Contractor will replace only the sections removed for construction. Please note, any re-installed wall covering by contractor may show observable differences to adjacent strips due to varying runs / dye lots.
5. Any custom window coverings/films must be removed prior to construction start.
6. Any custom hanging light fixtures such as chandeliers located in red areas should be removed prior to construction. Fixtures not removed will be protected in place but are subject to damage.



Reference notes #2 - #5. Areas highlighted PINK will be removed during construction. Areas highlighted GREEN may be removed pending clip assessment.

4' of ceiling at feature wall to be demo'd for curtain wall clip replacement



# Window Removal & Re-installation Photos

