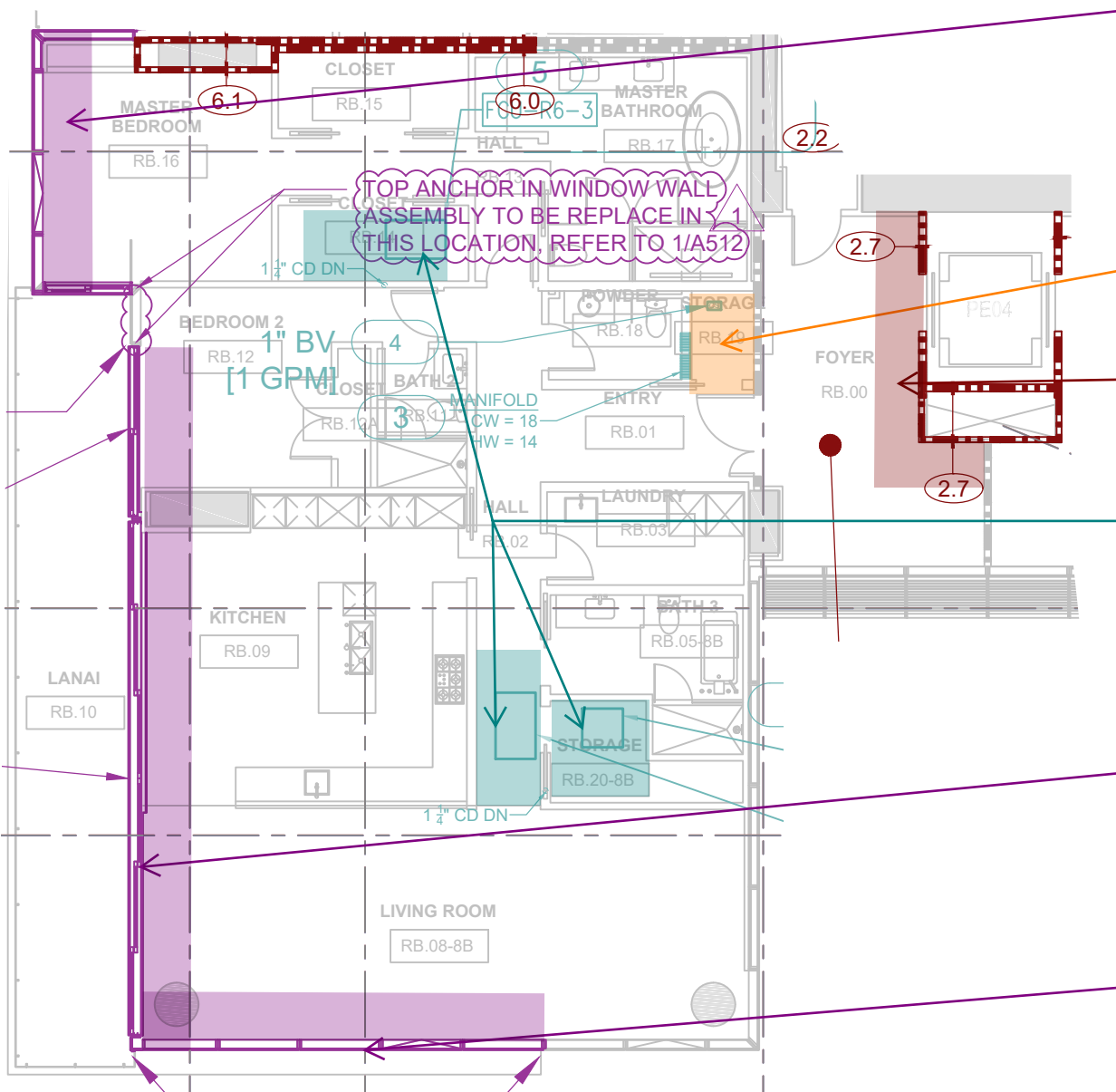




SWINERTON

Last updated: 12/13/21

Waiea Typical 01 Unit Details



14 feet of clearance & 8 feet of ceiling to be opened for removal of window unit, window to be reinstalled on new frames

New tempering valve within wall to be installed for each shower/tub, larger access panel to be installed if necessary.
Locate hot water balancing valve in ceiling, replace with flow limiting valve. Access panel to be installed if necessary.

Remove and replace wall.

Ceiling to be opened to accommodate installation of new FCU. Larger access panel to be installed.

Lift and slide door to be removed, new gaskets, mohairs, weather stripping, and ball valves to be replaced before reinstallation of lift and slide.

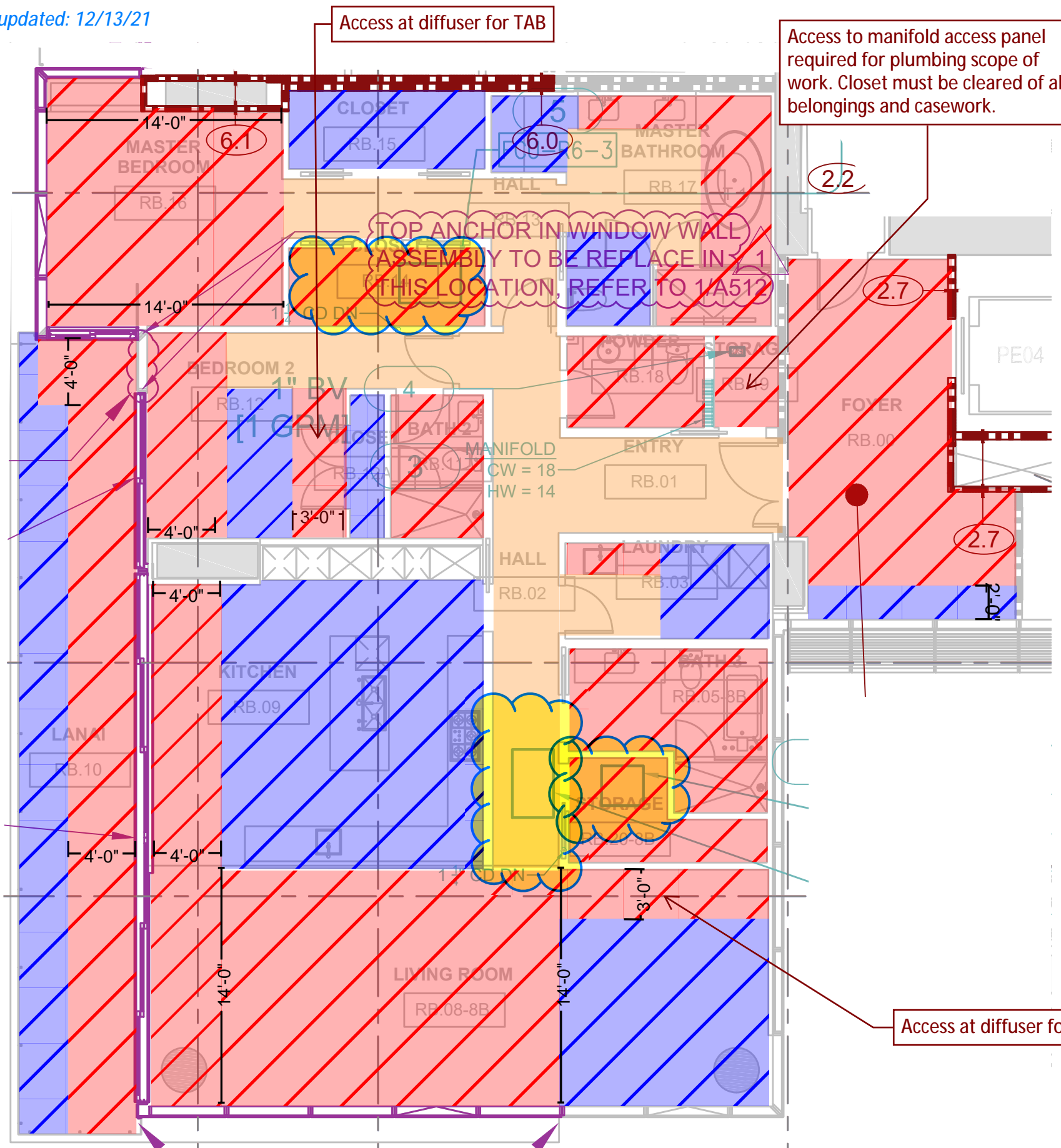
14 feet of clearance & 8 feet of ceiling to be opened for removal of window unit, window to be reinstalled on new frames



SWINERTON

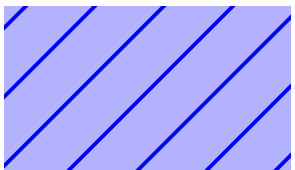
Last updated: 12/13/21

Waiea Typical 01 Unit Logistics / Storage



Ceiling Fixture Relocation Anticipated

Yellow Clouds - Light fixture and ceiling device layout subject to change



Blue Boxes - Areas designating storage spaces



Red Boxes - Areas require removal of personal belongings and artwork. Remove furniture if possible, or to be protected in place and/or relocated in the room by Contractor on a case-by-case basis.



Orange Boxes - Areas designating construction path of travel. Unit Owner to relocate all items to the designated storage spaces (Blue Boxes).

Unit owner to relocate all items to one of the designated storage spaces (Blue Boxes). If there is not enough space in these areas, Unit Owners will need to store their items outside of the unit throughout the duration of the work.

Everything will need to be moved out of the work areas (all areas not shaded blue are work/passage spaces). This includes all bedding, pillows, blankets, plants, and anything currently hanging on the walls. Rooms to remain unlocked throughout construction. All valuables need to be removed from the property by the unit owner.

Owner-installed permanent/fixed casework including (but not limited to) closet systems, shelving, etc. currently located in work zones must be removed prior to construction start.

Note: The entire unit will be without air conditioning, water, or electricity for extended periods of time during construction. Remove all perishables from freezers, refrigerators, coolers, etc. Remove any artwork that may be sensitive to heat, humidity, or dust.

Access at diffuser for TAB



SWINERTON

Last updated: 12/13/21

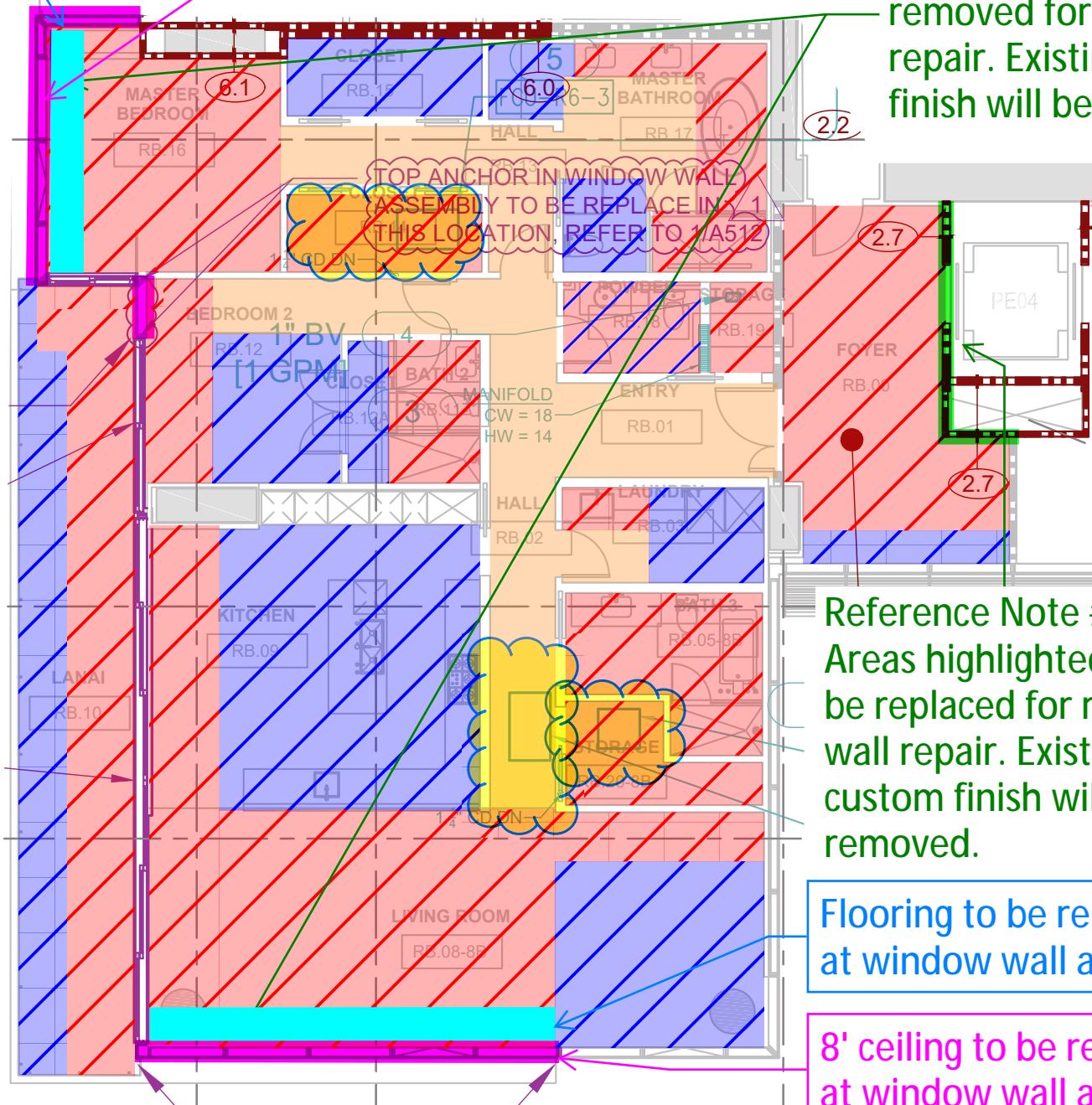
Waiea Typical 01 Unit Custom Finishes

*Refer to preceding sheet for drawing legend

Flooring may be removed at window wall areas

8' ceiling to be removed at window wall areas

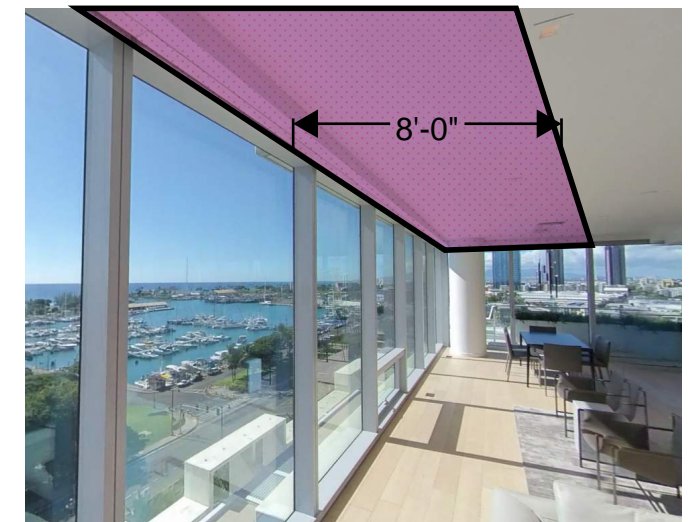
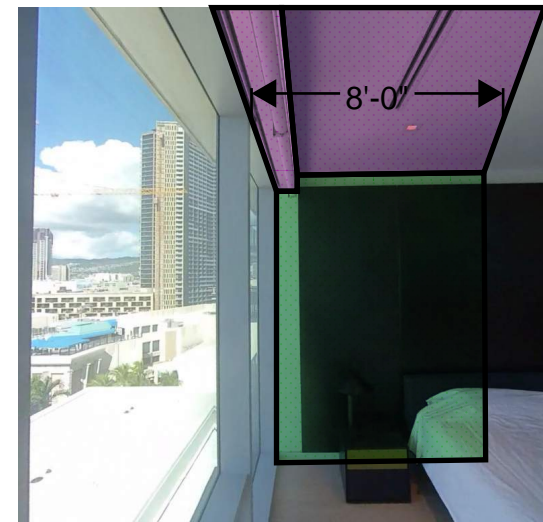
Reference Notes #2 and 4. Areas highlighted will be removed for window repair. Existing custom finish will be removed.



Reference Note #2. Areas highlighted will be replaced for rated wall repair. Existing custom finish will be removed.

Flooring to be removed at window wall areas

8' ceiling to be removed at window wall areas



General Notes:

1. If existing ceiling features such as lights, fire sprinklers, smoke detectors, speakers conflict with new FCU Access Panel, contractor shall attempt to maintain the original layout as much as possible.
2. If any custom finishes are directly installed on affected surfaces, they may be subject to permanent removal. In these instances, the affected surfaces will be returned as a standard level 5 painted finish.
3. Replacement of custom finishes shall be the responsibility of the unit owner. Replacement finishes must not be re-installed until after construction substantial completion and turnover of the unit back to the owner.
4. Replacement wall covering ONLY may be provided to contractor for reinstallation. Material must be transmitted to contractor by day of construction start. Contractor will replace only the sections removed for construction. Please note, any re-installed wall covering by contractor may show observable differences to adjacent strips due to varying runs / dye lots.
5. Any custom window coverings/films must be removed prior to construction start.
6. Any custom hanging light fixtures such as chandeliers located in red areas should be removed prior to construction. Fixtures not removed will be protected in place but are subject to damage.

Window Removal & Re-installation Photos

